

# \$789,000 - 3739 Cameron Heights Place, Edmonton

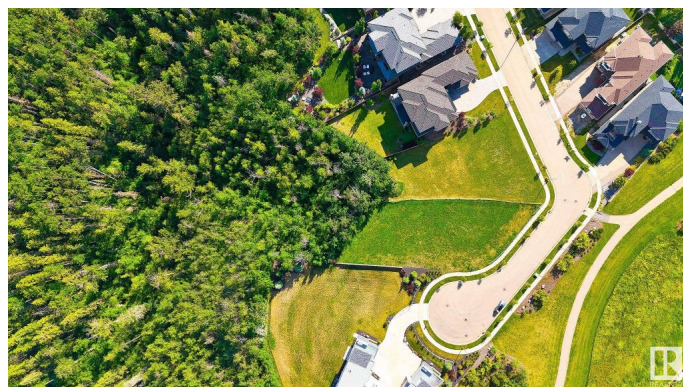
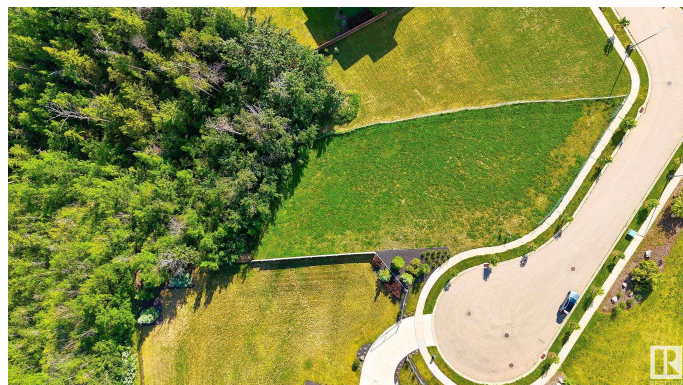
MLS® #E4448706

**\$789,000**

0 Bedroom, 0.00 Bathroom,  
Single Family on 0.00 Acres

Cameron Heights (Edmonton), Edmonton, AB

An unparalleled opportunity awaits in Cameron Heights, one of Edmonton's most distinguished estate communities. This 14,000+ sq/ft ravine lot, set within a quiet cul-de-sac, offers breathtaking, south-facing views and a 64' building pocket—a rare canvas for crafting a world-class custom residence. Surrounded by striking multi-million-dollar estates, this property delivers the prestige of architectural controls to safeguard your investment while allowing you to choose your own builder and vision. Imagine morning walks along the ravine trails just steps from your door, or evenings on a terrace designed to capture the endless sunset views. All while remaining only minutes from upscale shopping, dining, top-rated schools, and the Anthony Henday for seamless city access. Opportunities to secure a property of this scale and setting are few and far between—this is where your legacy home begins.



## Essential Information

|           |               |
|-----------|---------------|
| MLS® #    | E4448706      |
| Price     | \$789,000     |
| Bathrooms | 0.00          |
| Acres     | 0.00          |
| Type      | Single Family |

|          |                 |
|----------|-----------------|
| Sub-Type | Vacant Lot/Land |
| Status   | Active          |

**Community Information**

|             |                            |
|-------------|----------------------------|
| Address     | 3739 Cameron Heights Place |
| Area        | Edmonton                   |
| Subdivision | Cameron Heights (Edmonton) |
| City        | Edmonton                   |
| County      | ALBERTA                    |
| Province    | AB                         |
| Postal Code | T6M 0R1                    |

**Exterior**

|                   |   |
|-------------------|---|
| Exterior Features | Backs Onto Park/Trees, Cul-De-Sac, Flat Site, Golf Nearby, Level Land, No Back Lane, Playground Nearby, Public Transportation, Ravine View, Schools, Shopping Nearby, Treed Lot |
|-------------------|---|

**Additional Information**

|                |                 |
|----------------|-----------------|
| Date Listed    | July 18th, 2025 |
| Days on Market | 13              |
| Zoning         | Zone 20         |

DATA IS DEEMED RELIABLE BUT IS NOT GUARANTEED ACCURATE BY THE REALTORS® ASSOCIATION OF EDMONTON. COPYRIGHT 2025 BY THE REALTORS® ASSOCIATION OF EDMONTON. ALL RIGHTS RESERVED.Trademarks are owned or controlled by the Canadian Real Estate Association (CREA) and identify real estate professionals who are members of CREA (REALTOR®, REALTORS®) and/or the quality of services they provide (MLS®, Multiple Listing Service®)

Listing information last updated on July 31st, 2025 at 9:17pm MDT