

# \$0 - 11834 111 Avenue, Edmonton

MLS® #E4446803

**\$0**

0 Bedroom, 0.00 Bathroom,  
Retail on 0.00 Acres

Prince Rupert, Edmonton, AB

• Flexible main floor spaces suitable for a variety of professional/medical uses • Contemporary 2nd floor walk-up office • Excellent parking with 90± dedicated stalls • Strong Tenant mix featuring established restaurant/pub, medical users and more • Opportunity for pylon signage and/or exterior signage. • Great corner location fronting 119 St and 111 Avenue • Proximity to residential areas of Queen Mary Park, Westmount and Inglewood

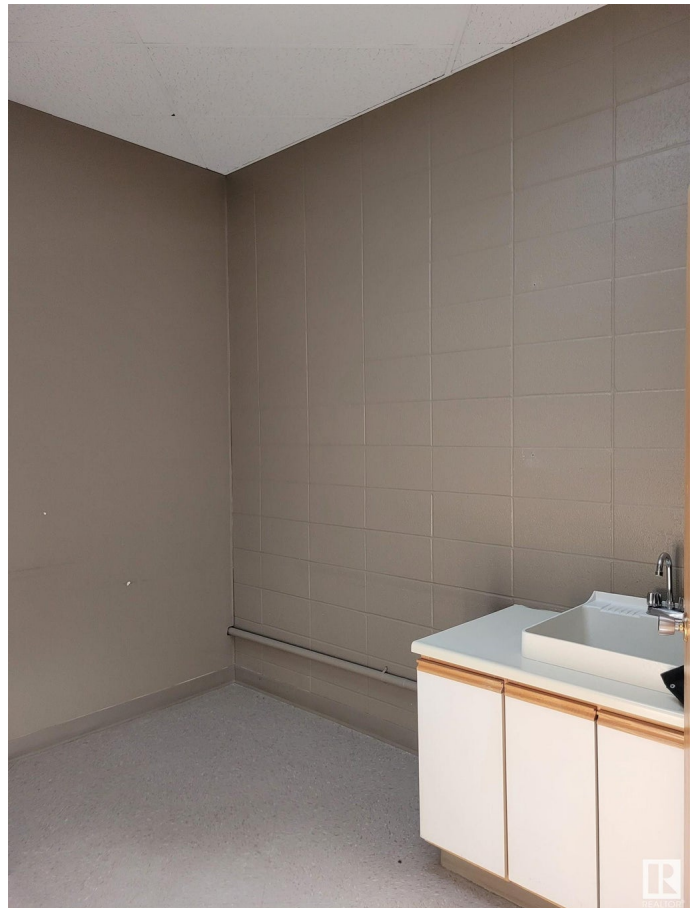
Built in 1977

## Essential Information

MLS® #	E4446803
Lease Rate	\$16
Bathrooms	0.00
Acres	0.00
Year Built	1977
Type	Retail
Status	Active

## Community Information

Address	11834 111 Avenue
Area	Edmonton
Subdivision	Prince Rupert
City	Edmonton
County	ALBERTA



Province	AB
Postal Code	T5G 0E1

### **Exterior**

Exterior	Mixed
Construction	Mixed

### **Additional Information**

Date Listed	July 9th, 2025
Days on Market	89
Zoning	Zone 08

DATA IS DEEMED RELIABLE BUT IS NOT GUARANTEED ACCURATE BY THE REALTORS® ASSOCIATION OF EDMONTON. COPYRIGHT 2025 BY THE REALTORS® ASSOCIATION OF EDMONTON. ALL RIGHTS RESERVED. Trademarks are owned or controlled by the Canadian Real Estate Association (CREA) and identify real estate professionals who are members of CREA (REALTOR®, REALTORS®) and/or the quality of services they provide (MLS®, Multiple Listing Service®)

Listing information last updated on October 6th, 2025 at 12:03pm MDT