

## \$778,800 - 4715 Kinney Road, Edmonton

MLS® #E4446597

**\$778,800**

3 Bedroom, 3.00 Bathroom, 2,153 sqft

Single Family on 0.00 Acres

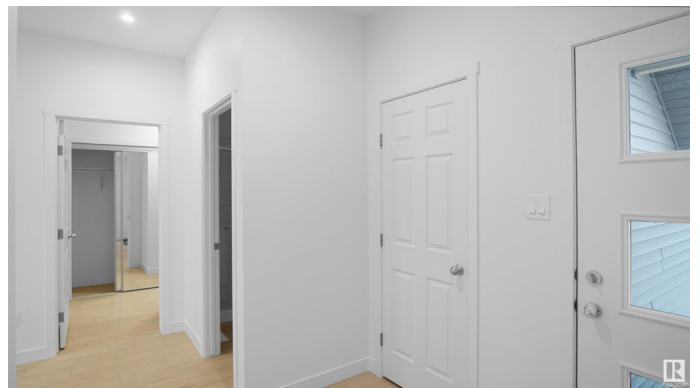
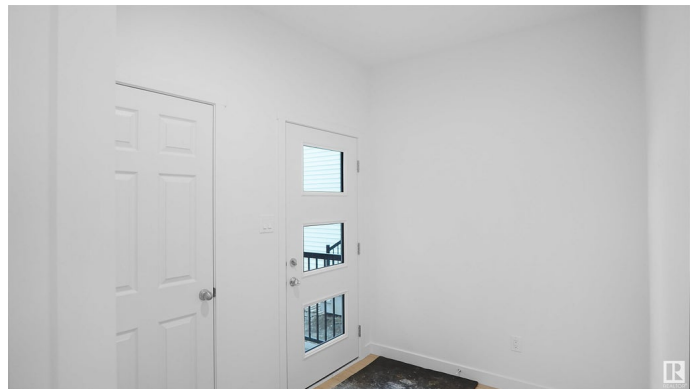
Keswick Area, Edmonton, AB

BACKING THE LAKE AND A FULL WALK OUT BASEMENT!!!! Welcome to the "Columbia" built by the award winning Pacesetter homes and is located on a quiet street in the heart Keswick Landing. This unique property in Keswick offers nearly 2150 sq ft of living space. The main floor features a large front entrance which has a closed off den next to it which can be used a bedroom/ office if needed and a 3 piece bath, as well as an open kitchen with quartz counters, and a large walkthrough pantry that is leads through to the mudroom and garage. Large windows allow natural light to pour in throughout the house. Upstairs you'll find 3 large bedrooms and a good sized bonus room. This home has a side separate entrance perfect for a future legal suite or nanny suite. \*\*\* Under construction and will be complete early in 2026 photos used are from the same model recently built and colors may vary \*\*\*

Built in 2025

### Essential Information

MLS® #	E4446597
Price	\$778,800
Bedrooms	3
Bathrooms	3.00
Full Baths	3



Square Footage	2,153
Acres	0.00
Year Built	2025
Type	Single Family
Sub-Type	Detached Single Family
Style	2 Storey
Status	Active

### Community Information

Address	4715 Kinney Road
Area	Edmonton
Subdivision	Keswick Area
City	Edmonton
County	ALBERTA
Province	AB
Postal Code	T6W 2J2

### Amenities

Amenities	Lake Privileges, Walkout Basement, See Remarks
Parking	Double Garage Attached
Is Waterfront	Yes

### Interior

Interior Features	ensuite bathroom
Appliances	Garage Control, Garage Opener, See Remarks
Heating	Forced Air-1, Natural Gas
Stories	2
Has Basement	Yes
Basement	Full, Unfinished

### Exterior

Exterior	Wood, Stone, Vinyl
Exterior Features	Backs Onto Lake, Golf Nearby, Lake Access Property, Park/Reserve, Playground Nearby, Public Swimming Pool, Public Transportation, Schools, Shopping Nearby, See Remarks
Roof	Asphalt Shingles
Construction	Wood, Stone, Vinyl
Foundation	Concrete Perimeter

### Additional Information

Date Listed July 8th, 2025

Days on Market 9

Zoning Zone 56

DATA IS DEEMED RELIABLE BUT IS NOT GUARANTEED ACCURATE BY THE REALTORS® ASSOCIATION OF EDMONTON. COPYRIGHT 2025 BY THE REALTORS® ASSOCIATION OF EDMONTON. ALL RIGHTS RESERVED. Trademarks are owned or controlled by the Canadian Real Estate Association (CREA) and identify real estate professionals who are members of CREA (REALTOR®, REALTORS®) and/or the quality of services they provide (MLS®, Multiple Listing Service®)

Listing information last updated on July 17th, 2025 at 5:17pm MDT