

\$313,000 - 140 150 Edwards Drive, Edmonton

MLS® #E4443092

\$313,000

2 Bedroom, 2.50 Bathroom, 1,096 sqft
Condo / Townhouse on 0.00 Acres

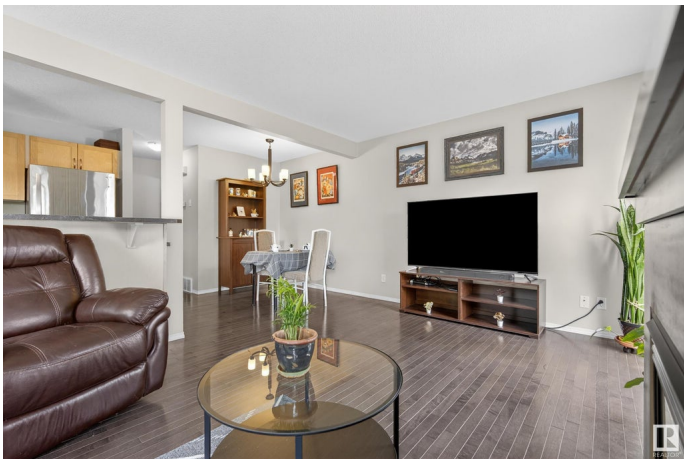
Ellerslie, Edmonton, AB

Stylish end-unit townhome offering added natural light and extra privacy. This well-maintained home features rich hardwood floors, custom aluminum blinds, and a spacious layout throughout. The primary bedroom includes a large ensuite for your comfort. The kitchen boasts a raised breakfast bar, perfect for entertaining. Enjoy a more private backyard setting and the convenience of a rare extra parking pad—room for three vehicles total. With lower condo fees this property offers exceptional value in a quiet, desirable community. Move-in ready and ideal for first-time buyers, downsizers, or investors seeking a low-maintenance lifestyle with smart features throughout.

Built in 2005

Essential Information

MLS® #	E4443092
Price	\$313,000
Bedrooms	2
Bathrooms	2.50
Full Baths	2
Half Baths	1
Square Footage	1,096
Acres	0.00
Year Built	2005



Type	Condo / Townhouse
Sub-Type	Townhouse
Style	2 Storey
Status	Active

Community Information

Address	140 150 Edwards Drive
Area	Edmonton
Subdivision	Ellerslie
City	Edmonton
County	ALBERTA
Province	AB
Postal Code	T6X 1M4

Amenities

Amenities	Detectors Smoke, Parking-Extra
Parking	Single Garage Attached

Interior

Interior Features	ensuite bathroom
Appliances	Dryer, Garage Control, Garage Opener, Microwave Hood Fan, Refrigerator, Stove-Electric, Washer, Window Coverings
Heating	Forced Air-1, Natural Gas
Fireplace	Yes
Fireplaces	Glass Door
Stories	2
Has Basement	Yes
Basement	Full, Unfinished

Exterior

Exterior	Wood, Vinyl
Exterior Features	Playground Nearby, Public Transportation, Shopping Nearby
Roof	Asphalt Shingles
Construction	Wood, Vinyl
Foundation	Concrete Perimeter

Additional Information

Date Listed	June 19th, 2025
Days on Market	4

Zoning	Zone 53
Condo Fee	\$245

DATA IS DEEMED RELIABLE BUT IS NOT GUARANTEED ACCURATE BY THE REALTORS® ASSOCIATION OF EDMONTON. COPYRIGHT 2025 BY THE REALTORS® ASSOCIATION OF EDMONTON. ALL RIGHTS RESERVED. Trademarks are owned or controlled by the Canadian Real Estate Association (CREA) and identify real estate professionals who are members of CREA (REALTOR®, REALTORS®) and/or the quality of services they provide (MLS®, Multiple Listing Service®)

Listing information last updated on June 23rd, 2025 at 5:17pm MDT