

\$197,900 - 260 10520 120 Street, Edmonton

MLS® #E4437252

\$197,900

2 Bedroom, 2.00 Bathroom, 913 sqft

Condo / Townhouse on 0.00 Acres

Queen Mary Park, Edmonton, AB

Wonderful 2 bedroom, 2 bath condo located in a fantastic central area. This 913 sq.ft with open floor plan home features a galley style kitchen - newer white appliances, ample cabinets, countertop space and pass through bar to dining area. Large bright livingroom with vinyl plank flooring, updated paint and access to the huge balcony (30' x 9') with newer duradecking . Primary bedroom has large closet, new blind and 4 piece ensuite. This property is great for sharing as the guest bedroom is on the opposite side from the main bedroom and an additional 4 piece bath adjacent to it. Large storage room with cabinet and convenient laundry area with washer and dryer complete this fantastic unit. Very reasonable condo fee's include heat and water. The location is prime within walking distance, to Grant MacEwan, Grocery stores, Pubs, Nightlife and Public Transportation. Energized parking stall close to the front door 343. Well maintained building with on-site management, see today!

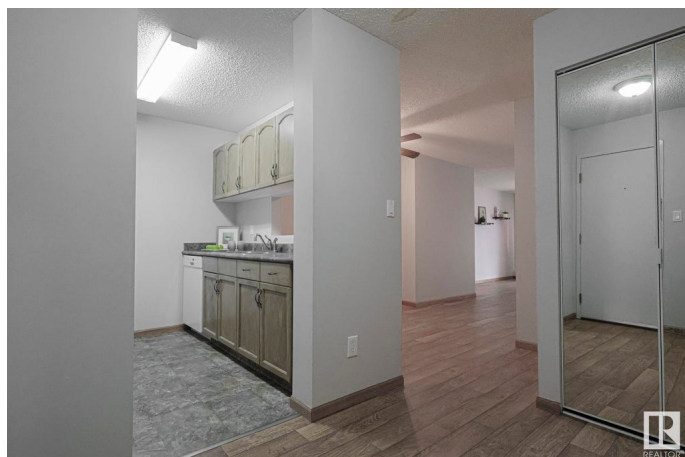
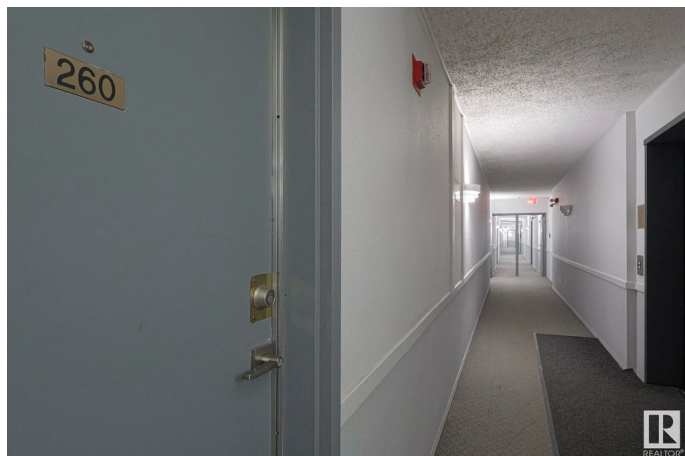
Built in 1994

Essential Information

MLS® # E4437252

Price \$197,900

Bedrooms 2



Bathrooms	2.00
Full Baths	2
Square Footage	913
Acres	0.00
Year Built	1994
Type	Condo / Townhouse
Sub-Type	Lowrise Apartment
Style	Single Level Apartment
Status	Active

Community Information

Address	260 10520 120 Street
Area	Edmonton
Subdivision	Queen Mary Park
City	Edmonton
County	ALBERTA
Province	AB
Postal Code	T5H 4L9

Amenities

Amenities	Deck, Intercom, No Animal Home, No Smoking Home, Parking-Visitor, Storage-In-Suite
Parking	Stall

Interior

Interior Features	ensuite bathroom
Appliances	Dishwasher-Built-In, Dryer, Fan-Ceiling, Hood Fan, Refrigerator, Stove-Electric, Washer, Window Coverings
Heating	Hot Water, Natural Gas
# of Stories	4
Stories	1
Has Basement	Yes
Basement	None, No Basement

Exterior

Exterior	Wood, Stucco
Exterior Features	Landscaped, Level Land, Park/Reserve, Picnic Area, Playground Nearby, Public Swimming Pool, Public Transportation, Schools, Shopping Nearby

Roof	Asphalt Shingles
Construction	Wood, Stucco
Foundation	Concrete Perimeter

Additional Information

Date Listed	May 17th, 2025
Days on Market	4
Zoning	Zone 08
Condo Fee	\$464

DATA IS DEEMED RELIABLE BUT IS NOT GUARANTEED ACCURATE BY THE REALTORS® ASSOCIATION OF EDMONTON. COPYRIGHT 2025 BY THE REALTORS® ASSOCIATION OF EDMONTON. ALL RIGHTS RESERVED.Trademarks are owned or controlled by the Canadian Real Estate Association (CREA) and identify real estate professionals who are members of CREA (REALTOR®, REALTORS®) and/or the quality of services they provide (MLS®, Multiple Listing Service®)

Listing information last updated on May 21st, 2025 at 4:47am MDT