

\$159,900 - 202 70 Alpine Place, St. Albert

MLS® #E4435997

\$159,900

2 Bedroom, 1.00 Bathroom, 884 sqft

Condo / Townhouse on 0.00 Acres

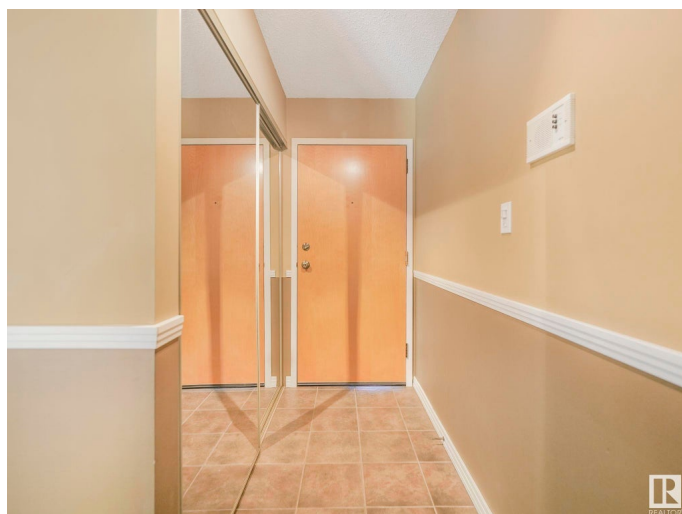
Akinsdale, St. Albert, AB

Looking for your first home or a smart, stylish upgrade? This beautifully updated 2-bedroom condo blends comfort, convenience, and value. Tucked into a quiet corner of St. Albert, it backs onto a lush green space with pickleball courts, a playground, and plenty of room to relax. Inside, you'll love the bright, functional layout featuring a spacious living room that opens onto a private balcony with peaceful views. The kitchen, with upgraded stainless steel appliances, offers ample space to cook and entertain, while in-suite laundry and storage help keep life organized. Two generous bedrooms provide flexibility, and the show-stopping bathroom adds a touch of luxury. With TWO parking stalls and quick access to shopping, dining, and the Henday, this home is an ideal pick for anyone seeking comfort and calm—without breaking the bank.

Built in 1983

Essential Information

MLS® #	E4435997
Price	\$159,900
Bedrooms	2
Bathrooms	1.00
Full Baths	1
Square Footage	884
Acres	0.00



Year Built	1983
Type	Condo / Townhouse
Sub-Type	Lowrise Apartment
Style	Single Level Apartment
Status	Active

Community Information

Address	202 70 Alpine Place
Area	St. Albert
Subdivision	Akinsdale
City	St. Albert
County	ALBERTA
Province	AB
Postal Code	T8N 3Y2

Amenities

Amenities	Off Street Parking, Hot Water Natural Gas, Parking-Visitor, Storage-In-Suite, See Remarks
Parking	2 Outdoor Stalls

Interior

Appliances	Dishwasher-Built-In, Dryer, Freezer, Hood Fan, Oven-Microwave, Refrigerator, Stove-Electric, Washer, See Remarks, Curtains and Blinds
Heating	Forced Air-1, Natural Gas
Fireplace	Yes
Fireplaces	Tile Surround
# of Stories	3
Stories	1
Has Basement	Yes
Basement	None, No Basement

Exterior

Exterior	Wood, Stucco
Exterior Features	Backs Onto Park/Trees, No Back Lane, No Through Road, Playground Nearby, Public Transportation, Schools, Shopping Nearby, See Remarks
Roof	Asphalt Shingles
Construction	Wood, Stucco
Foundation	Concrete Perimeter

School Information

Elementary	Elmer S. Gish School
Middle	Elmer S. Gish School

Additional Information

Date Listed	May 12th, 2025
Days on Market	38
Zoning	Zone 24
Condo Fee	\$483

DATA IS DEEMED RELIABLE BUT IS NOT GUARANTEED ACCURATE BY THE REALTORS® ASSOCIATION OF EDMONTON. COPYRIGHT 2025 BY THE REALTORS® ASSOCIATION OF EDMONTON. ALL RIGHTS RESERVED.Trademarks are owned or controlled by the Canadian Real Estate Association (CREA) and identify real estate professionals who are members of CREA (REALTOR®, REALTORS®) and/or the quality of services they provide (MLS®, Multiple Listing Service®)

Listing information last updated on June 19th, 2025 at 5:17am MDT