

\$755,000 - 13 Darby Crescent, Spruce Grove

MLS® #E4435723

\$755,000

1 Bedroom, 1.50 Bathroom, 1,331 sqft
Single Family on 0.00 Acres

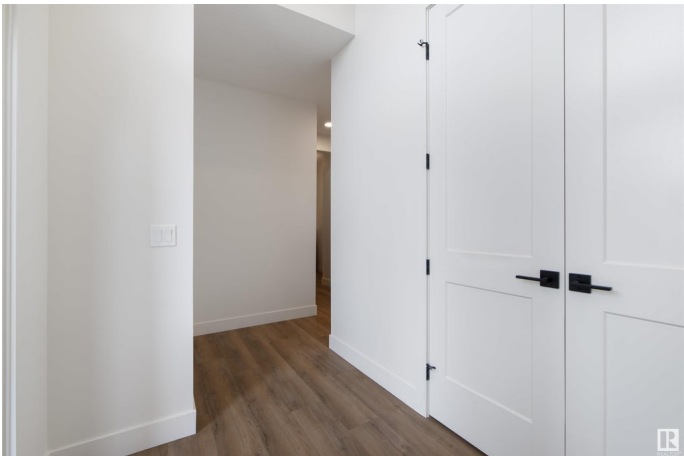
Deer Park_SPGR, Spruce Grove, AB

Welcome to this beautifully crafted bungalow in Deer Park Estates, built by HRD Homes. This residence features over 1,300 SQ FT of luxurious living space, where every detail has been thoughtfully designed. The open-concept main area showcases a custom Venetian plaster hood fan and fireplace, accented with rich oak wood finishes. The dining room and primary bedroom are adorned with unique, custom-designed feature walls, adding character and elegance to the home. Practicality meets comfort with a heated oversized triple garage, complete with an RV bay, floor drain, and hot & cold hose bibs. This home offers both style and convenience, making it a true gem in Deer Park Estates.

Built in 2025

Essential Information

MLS® #	E4435723
Price	\$755,000
Bedrooms	1
Bathrooms	1.50
Full Baths	1
Half Baths	1
Square Footage	1,331
Acres	0.00
Year Built	2025



Type	Single Family
Sub-Type	Detached Single Family
Style	Bungalow
Status	Active

Community Information

Address	13 Darby Crescent
Area	Spruce Grove
Subdivision	Deer Park_SPGR
City	Spruce Grove
County	ALBERTA
Province	AB
Postal Code	T7X 0W9

Amenities

Amenities	Carbon Monoxide Detectors, Detectors Smoke, See Remarks
Parking	Double Garage Attached, Heated, RV Parking

Interior

Interior Features	ensuite bathroom
Appliances	See Remarks
Heating	Forced Air-1, Natural Gas
Fireplace	Yes
Fireplaces	See Remarks
Stories	1
Has Basement	Yes
Basement	Full, Unfinished

Exterior

Exterior	Wood, Brick, Vinyl
Exterior Features	Golf Nearby, Playground Nearby, Public Transportation, Schools
Roof	Asphalt Shingles
Construction	Wood, Brick, Vinyl
Foundation	Concrete Perimeter

Additional Information

Date Listed	May 9th, 2025
Days on Market	13
Zoning	Zone 91

DATA IS DEEMED RELIABLE BUT IS NOT GUARANTEED ACCURATE BY THE REALTORS® ASSOCIATION OF EDMONTON. COPYRIGHT 2025 BY THE REALTORS® ASSOCIATION OF EDMONTON. ALL RIGHTS RESERVED.Trademarks are owned or controlled by the Canadian Real Estate Association (CREA) and identify real estate professionals who are members of CREA (REALTOR®, REALTORS®) and/or the quality of services they provide (MLS®, Multiple Listing Service®)

Listing information last updated on May 22nd, 2025 at 3:17am MDT