

# \$780,000 - 7 Darby Crescent, Spruce Grove

MLS® #E4435265

**\$780,000**

4 Bedroom, 2.50 Bathroom, 1,501 sqft  
Single Family on 0.00 Acres

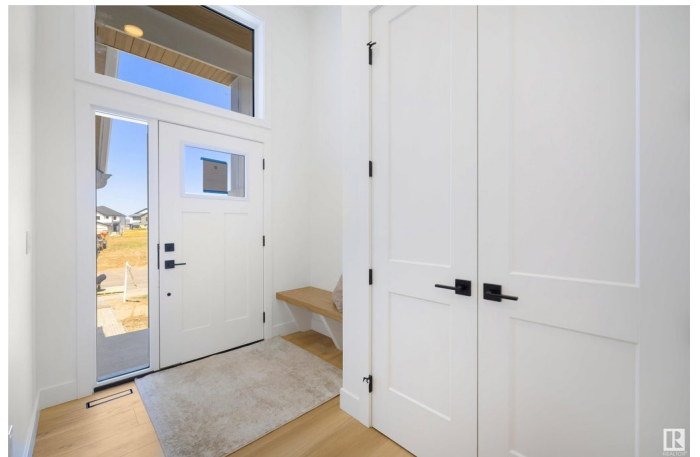
Deer Park\_SPGR, Spruce Grove, AB

Discover this stunning Deer Park Estate property, built by HRD Homes, where luxury meets thoughtful design. The main living area is a true masterpiece, featuring a custom Venetian plaster hood fan and a gas fireplace framed by stone and a classic oak mantel. The living room offers unique arched drywall nooks, complete with built-in cabinets and floating shelves, creating a cozy yet elegant space. The primary bedroom boasts a custom-designed feature wall, adding a touch of sophistication. With one bedroom plus a den/bedroom on the main floor, this home is as functional as it is stylish. The triple car garage is heated and equipped with a floor drain, as well as hot and cold hose bibs—perfect for year-round convenience. With a spacious finished basement, this home is ready to meet all your needs.

Built in 2025

## Essential Information

|                |           |
|----------------|-----------|
| MLS® #         | E4435265  |
| Price          | \$780,000 |
| Bedrooms       | 4         |
| Bathrooms      | 2.50      |
| Full Baths     | 2         |
| Half Baths     | 1         |
| Square Footage | 1,501     |



|            |                        |
|------------|------------------------|
| Acres      | 0.00                   |
| Year Built | 2025                   |
| Type       | Single Family          |
| Sub-Type   | Detached Single Family |
| Style      | Bungalow               |
| Status     | Active                 |

### **Community Information**

|             |                  |
|-------------|------------------|
| Address     | 7 Darby Crescent |
| Area        | Spruce Grove     |
| Subdivision | Deer Park_SPGR   |
| City        | Spruce Grove     |
| County      | ALBERTA          |
| Province    | AB               |
| Postal Code | T7X 0W9          |

### **Amenities**

|                |   |
|----------------|---|
| Amenities      | Carbon Monoxide Detectors, Ceiling 9 ft., Detectors Smoke |
| Parking Spaces | 6   |
| Parking        | Triple Garage Attached                                    |

### **Interior**

|                   |                           |
|-------------------|---------------------------|
| Interior Features | ensuite bathroom          |
| Appliances        | See Remarks               |
| Heating           | Forced Air-1, Natural Gas |
| Fireplace         | Yes                       |
| Fireplaces        | Mantel, Stone Facing      |
| Stories           | 2                         |
| Has Basement      | Yes                       |
| Basement          | Full, Finished            |

### **Exterior**

|                   |   |
|-------------------|---|
| Exterior          | Wood, Brick, Vinyl  |
| Exterior Features | Golf Nearby, Playground Nearby, Public Transportation, Schools, Shopping Nearby |
| Roof              | Asphalt Shingles  |
| Construction      | Wood, Brick, Vinyl  |
| Foundation        | Concrete Perimeter  |

### **Additional Information**

Date Listed May 7th, 2025

Days on Market 48

Zoning Zone 91

DATA IS DEEMED RELIABLE BUT IS NOT GUARANTEED ACCURATE BY THE REALTORS® ASSOCIATION OF EDMONTON. COPYRIGHT 2025 BY THE REALTORS® ASSOCIATION OF EDMONTON. ALL RIGHTS RESERVED. Trademarks are owned or controlled by the Canadian Real Estate Association (CREA) and identify real estate professionals who are members of CREA (REALTOR®, REALTORS®) and/or the quality of services they provide (MLS®, Multiple Listing Service®)

Listing information last updated on June 24th, 2025 at 9:31am MDT