

## \$399,900 - 1907 24 Street, Edmonton

MLS® #E4434433

**\$399,900**

4 Bedroom, 3.50 Bathroom, 1,497 sqft

Single Family on 0.00 Acres

Laurel, Edmonton, AB

No Condo Fees! Nestled in the sought-after Laurel community, this Homes by Avi end-unit offers nearly 2100sqft. of stylish, well-designed Living space. Featuring total 4 spacious bedrooms, including a master suite with a walk-in closet & en-suite, plus 3.5 bathrooms, this home is built for effortless living. The open-concept main floor boasts a chef's kitchen with upgraded stainless appliances, quartz countertops with an eating bar, and ample cabinetry. Huge living room with elegant Fireplace and feature wall adds a fine touch. Downstairs, the Finished Basement adds even more value, complete with a 4th bedroom, Full Washroom, and inviting Living space—perfect for guests or extra family room. Outside, enjoy a double detached garage/mancave—fully finished for your car and SUV. The backyard oasis features a deck and enough space to enjoy all summer. Close to parks, a new K-9 school, rec center, FREE park & ride—this immaculate, move-in-ready end-unit in Laurel is the one you've been waiting for!

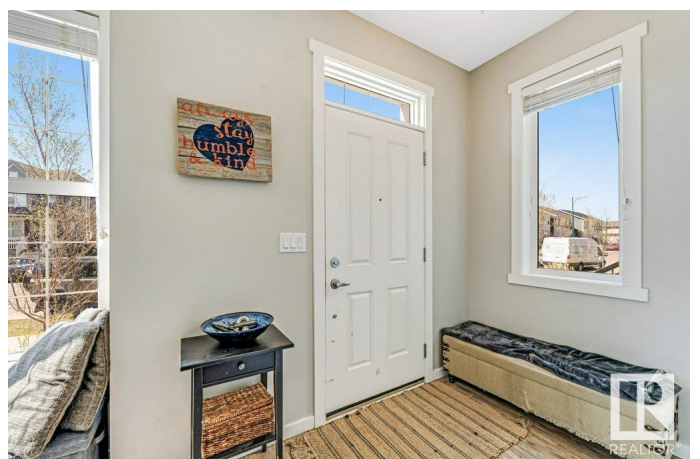
Built in 2018

### Essential Information

MLS® # E4434433

Price \$399,900

Bedrooms 4



Bathrooms	3.50
Full Baths	3
Half Baths	1
Square Footage	1,497
Acres	0.00
Year Built	2018
Type	Single Family
Sub-Type	Residential Attached
Style	2 Storey
Status	Active

### Community Information

Address	1907 24 Street
Area	Edmonton
Subdivision	Laurel
City	Edmonton
County	ALBERTA
Province	AB
Postal Code	T6T 2C9

### Amenities

Amenities	Ceiling 9 ft., Detectors Smoke
Parking	Double Garage Detached

### Interior

Interior Features	ensuite bathroom
Appliances	Dishwasher-Built-In, Dryer, Garage Control, Garage Opener, Refrigerator, Stove-Electric, Washer, Window Coverings
Heating	Forced Air-1, Natural Gas
Fireplace	Yes
Fireplaces	Mantel
Stories	3
Has Basement	Yes
Basement	Full, Finished

### Exterior

Exterior	Wood, Vinyl
Exterior Features	Back Lane, Commercial, Fenced, Landscaped, Playground Nearby, Public Swimming Pool, Public Transportation, Schools, Shopping

	Nearby
Roof	Asphalt Shingles
Construction	Wood, Vinyl
Foundation	Concrete Perimeter

### **Additional Information**

Date Listed	May 4th, 2025
Days on Market	2
Zoning	Zone 30

DATA IS DEEMED RELIABLE BUT IS NOT GUARANTEED ACCURATE BY THE REALTORS® ASSOCIATION OF EDMONTON. COPYRIGHT 2025 BY THE REALTORS® ASSOCIATION OF EDMONTON. ALL RIGHTS RESERVED. Trademarks are owned or controlled by the Canadian Real Estate Association (CREA) and identify real estate professionals who are members of CREA (REALTOR®, REALTORS®) and/or the quality of services they provide (MLS®, Multiple Listing Service®)

Listing information last updated on May 6th, 2025 at 3:02pm MDT