

\$295,000 - 48 6905 25 Avenue, Edmonton

MLS® #E4432690

\$295,000

1 Bedroom, 1.00 Bathroom, 501 sqft
Condo / Townhouse on 0.00 Acres

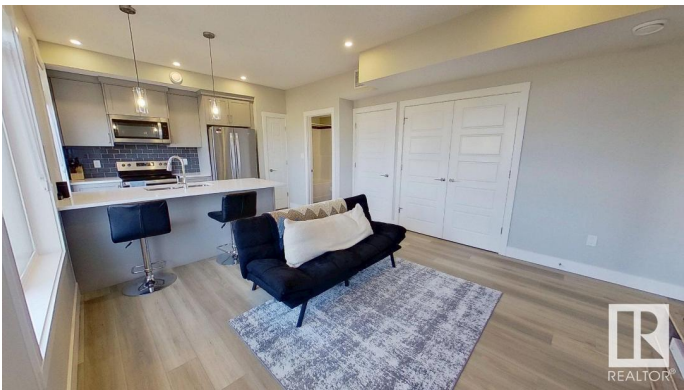
The Orchards At Ellerslie, Edmonton, AB

Modern One-Bedroom Townhouse in The Orchards! Welcome to this stunning newly built one-bedroom townhouse in the sought-after Orchards community of southwest Edmonton. Constructed in 2024, this home offers contemporary design, energy-efficient features, and unbeatable convenience—all within a vibrant and growing neighborhood. Essential amenities, including grocery stores, gas stations, schools, and bus transit, are all within a five- minute radius. Inside, the stylish open-concept layout is complemented by large windows, sleek finishes, and a modern kitchen equipped with high-end appliances and elegant cabinetry.

Built in 2024

Essential Information

| | |
|----------------|-------------------|
| MLS® # | E4432690 |
| Price | \$295,000 |
| Bedrooms | 1 |
| Bathrooms | 1.00 |
| Full Baths | 1 |
| Square Footage | 501 |
| Acres | 0.00 |
| Year Built | 2024 |
| Type | Condo / Townhouse |
| Sub-Type | Townhouse |



| | |
|--------|------------------------|
| Style | Single Level Apartment |
| Status | Active |

Community Information

| | |
|-------------|---------------------------|
| Address | 48 6905 25 Avenue |
| Area | Edmonton |
| Subdivision | The Orchards At Ellerslie |
| City | Edmonton |
| County | ALBERTA |
| Province | AB |
| Postal Code | T6X 1A1 |

Amenities

| | |
|-----------|--|
| Amenities | Ceiling 9 ft., Club House, Detectors Smoke, Front Porch, Hot Water Natural Gas, Parking-Visitor, Smart/Program. Thermostat, Recreation Room/Centre, Storage-In-Suite |
| Parking | Stall |

Interior

| | |
|--------------|---|
| Appliances | Dishwasher-Built-In, Dryer, Freezer, Microwave Hood Fan, Oven-Built-In, Oven-Microwave, Refrigerator, Stove-Countertop Electric, Stove-Electric, Washer, Window Coverings |
| Heating | Baseboard, Natural Gas |
| Stories | 1 |
| Has Basement | Yes |
| Basement | None, No Basement |

Exterior

| | |
|-------------------|--|
| Exterior | Wood |
| Exterior Features | Landscaped, Level Land, Paved Lane, Playground Nearby, Public Transportation, Schools, Shopping Nearby |
| Roof | Asphalt Shingles |
| Construction | Wood |
| Foundation | Concrete Perimeter |

Additional Information

| | |
|----------------|------------------|
| Date Listed | April 25th, 2025 |
| Days on Market | 27 |
| Zoning | Zone 53 |
| Condo Fee | \$105 |

DATA IS DEEMED RELIABLE BUT IS NOT GUARANTEED ACCURATE BY THE REALTORS® ASSOCIATION OF EDMONTON. COPYRIGHT 2025 BY THE REALTORS® ASSOCIATION OF EDMONTON. ALL RIGHTS RESERVED. Trademarks are owned or controlled by the Canadian Real Estate Association (CREA) and identify real estate professionals who are members of CREA (REALTOR®, REALTORS®) and/or the quality of services they provide (MLS®, Multiple Listing Service®)

Listing information last updated on May 22nd, 2025 at 6:17am MDT