

## \$479,900 - 14026 158a Avenue, Edmonton

MLS® #E4432665

**\$479,900**

3 Bedroom, 2.50 Bathroom, 1,390 sqft

Single Family on 0.00 Acres

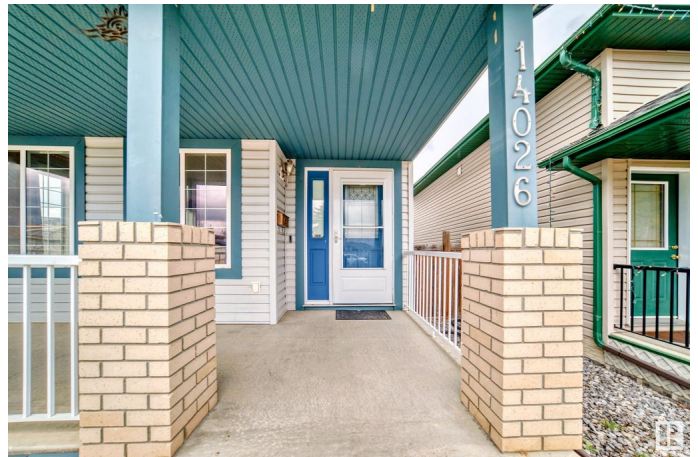
Carlton, Edmonton, AB

Welcome to an immaculate 3 bedroom, 2 story house in one of the sought after communities of Calrlton in North West Edmonton. When you enter the main floor, you will find open concetp floor plan with big bright kitchen with dinning area and garden doors to the oversized deck and backyard. Upstairs has large master bedroom with huge walking closet and 2 decent size bedrooms. Baseemnt has been developed with family room, office nook, 3 pcs bathroom and plenty of windows for natural light. Cornor lot house in cul-de-sac comes with sapcious front Veranda for your summer time sitiing and enjoying with family and friends. Recent Upgrades include : NEW SHINGLE, NEW WASHING MACHINE, NEW HOT WATER TANK, NEW MICROWAVE and NEW PAINT. DOUBLE DETACHED GARAGE has been built few years ago. Close to all amenities: school, shopping, playground, bus stop. Close to Anthony Henday and yellow Head Trail.

Built in 2004

### Essential Information

MLS® #	E4432665
Price	\$479,900
Bedrooms	3
Bathrooms	2.50



Full Baths	2
Half Baths	1
Square Footage	1,390
Acres	0.00
Year Built	2004
Type	Single Family
Sub-Type	Detached Single Family
Style	2 Storey
Status	Active

### Community Information

Address	14026 158a Avenue
Area	Edmonton
Subdivision	Carlton
City	Edmonton
County	ALBERTA
Province	AB
Postal Code	T6V 1V7

### Amenities

Amenities	Deck, Detectors Smoke
Parking	Double Garage Detached

### Interior

Appliances	Dishwasher-Built-In, Dryer, Hood Fan, Refrigerator, Stove-Electric, Washer, Window Coverings
Heating	Forced Air-1, Natural Gas
Stories	3
Has Basement	Yes
Basement	Full, Finished

### Exterior

Exterior	Wood, Vinyl
Exterior Features	Playground Nearby, Public Transportation, Schools, Shopping Nearby, See Remarks
Roof	Asphalt Shingles
Construction	Wood, Vinyl
Foundation	Concrete Perimeter

### Additional Information

Date Listed April 24th, 2025

Days on Market 28

Zoning Zone 27

DATA IS DEEMED RELIABLE BUT IS NOT GUARANTEED ACCURATE BY THE REALTORS® ASSOCIATION OF EDMONTON. COPYRIGHT 2025 BY THE REALTORS® ASSOCIATION OF EDMONTON. ALL RIGHTS RESERVED. Trademarks are owned or controlled by the Canadian Real Estate Association (CREA) and identify real estate professionals who are members of CREA (REALTOR®, REALTORS®) and/or the quality of services they provide (MLS®, Multiple Listing Service®)

Listing information last updated on May 22nd, 2025 at 5:47am MDT