

## \$139,900 - 206 42 Alpine Place, St. Albert

MLS® #E4431421

**\$139,900**

2 Bedroom, 1.00 Bathroom, 857 sqft

Condo / Townhouse on 0.00 Acres

Akinsdale, St. Albert, AB

Immaculate 2 bedroom 1 bathroom 2nd floor apartment backing onto park. In suite laundry, fireplace has been decommissioned so you could go electric or gas. 2 parking stalls 161 energized and 128 not energized.

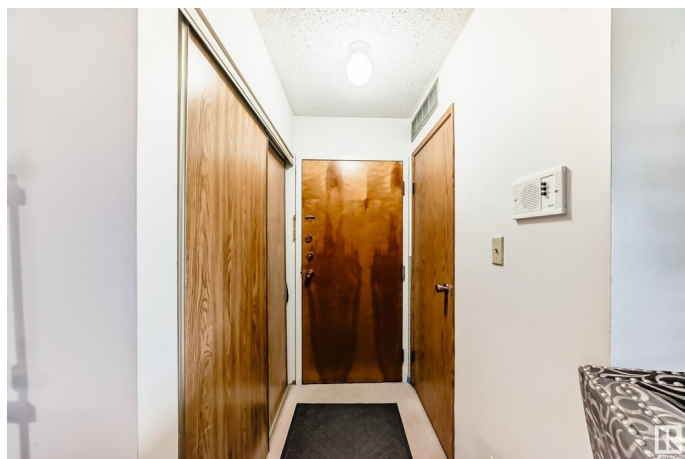
Built in 1982

### Essential Information

MLS® #	E4431421
Price	\$139,900
Bedrooms	2
Bathrooms	1.00
Full Baths	1
Square Footage	857
Acres	0.00
Year Built	1982
Type	Condo / Townhouse
Sub-Type	Lowrise Apartment
Style	Single Level Apartment
Status	Active

### Community Information

Address	206 42 Alpine Place
Area	St. Albert
Subdivision	Akinsdale
City	St. Albert
County	ALBERTA



Province	AB
Postal Code	T8N 3Y2

### Amenities

Amenities	Hot Water Natural Gas, Intercom, No Animal Home, No Smoking Home, Parking-Plug-Ins, Parking-Visitor, Security Door, Vinyl Windows
Parking Spaces	2
Parking	2 Outdoor Stalls

### Interior

Interior Features	ensuite bathroom
Appliances	Dishwasher-Built-In, Dryer, Refrigerator, Stove-Electric, Washer
Heating	Forced Air-1, Natural Gas
# of Stories	3
Stories	4
Has Basement	Yes
Basement	None, No Basement

### Exterior

Exterior	Wood
Exterior Features	Backs Onto Park/Trees, Fenced, Golf Nearby, Landscaped, Park/Reserve, Playground Nearby, Public Swimming Pool, Public Transportation, Schools, Shopping Nearby
Roof	Asphalt Shingles
Construction	Wood
Foundation	Concrete Perimeter

### Additional Information

Date Listed	April 17th, 2025
Days on Market	56
Zoning	Zone 24
Condo Fee	\$490

DATA IS DEEMED RELIABLE BUT IS NOT GUARANTEED ACCURATE BY THE REALTORS® ASSOCIATION OF EDMONTON. COPYRIGHT 2025 BY THE REALTORS® ASSOCIATION OF EDMONTON. ALL RIGHTS RESERVED. Trademarks are owned or controlled by the Canadian Real Estate Association (CREA) and identify real estate professionals who are members of CREA (REALTOR®, REALTORS®) and/or the quality of services they provide (MLS®, Multiple Listing Service®)

Listing information last updated on June 12th, 2025 at 7:17am MDT