

\$199,800 - 114 11915 106 Avenue, Edmonton

MLS® #E4428793

\$199,800

2 Bedroom, 2.00 Bathroom, 1,072 sqft

Condo / Townhouse on 0.00 Acres

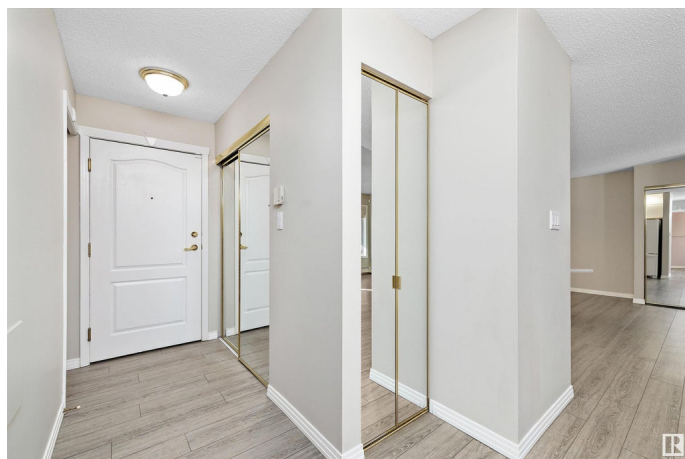
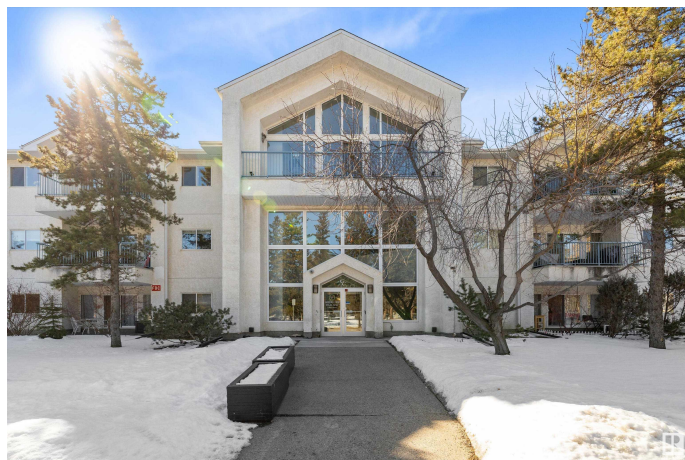
Queen Mary Park, Edmonton, AB

Welcome to stress-free living in the heart of Edmonton's Brewery District! This beautifully maintained main-floor condo offers 1,100 sq. ft. of bright, open-concept living—perfect for entertaining. The SPACIOUS LIVING ROOM flows effortlessly to your private BALCONY, ideal for morning coffee or evening relaxation. You'll love the TWO generous bedrooms, including a primary suite with 5-PC ENSUITE BATH, plus a second full 4-PC bathroom, in-suite laundry, and plenty of storage. This fantastic unit also comes with a TITLED UNDERGROUND PARKING stall! The building has incredible amenities: a huge fitness center with city views, social room with a pool table, car wash bay, and underground bicycle parking. Steps from shopping, dining, MacEwan University, NAIT, Rogers Place, River Valley and public transit—this location is unbeatable. Move in and enjoy!

Built in 1993

Essential Information

MLS® #	E4428793
Price	\$199,800
Bedrooms	2
Bathrooms	2.00
Full Baths	2



Square Footage	1,072
Acres	0.00
Year Built	1993
Type	Condo / Townhouse
Sub-Type	Lowrise Apartment
Style	Single Level Apartment
Status	Active

Community Information

Address	114 11915 106 Avenue
Area	Edmonton
Subdivision	Queen Mary Park
City	Edmonton
County	ALBERTA
Province	AB
Postal Code	T5H 0S2

Amenities

Amenities	Car Wash, Detectors Smoke, Parking-Visitor, Secured Parking, Security Door
Parking Spaces	1
Parking	Underground

Interior

Interior Features	ensuite bathroom
Appliances	Dishwasher-Built-In, Dryer, Garage Opener, Microwave Hood Fan, Refrigerator, Stove-Electric, Washer, Window Coverings
Heating	Baseboard, Hot Water, Natural Gas
# of Stories	3
Stories	1
Has Basement	Yes
Basement	None, No Basement

Exterior

Exterior	Wood, Stucco
Exterior Features	Backs Onto Park/Trees, Fenced, Golf Nearby, Landscaped, Paved Lane, Playground Nearby, Public Transportation, Shopping Nearby
Roof	Asphalt Shingles
Construction	Wood, Stucco

Foundation Concrete Perimeter

Additional Information

Date Listed April 3rd, 2025
Days on Market 16
Zoning Zone 08
Condo Fee \$624

DATA IS DEEMED RELIABLE BUT IS NOT GUARANTEED ACCURATE BY THE REALTORS® ASSOCIATION OF EDMONTON. COPYRIGHT 2025 BY THE REALTORS® ASSOCIATION OF EDMONTON. ALL RIGHTS RESERVED.Trademarks are owned or controlled by the Canadian Real Estate Association (CREA) and identify real estate professionals who are members of CREA (REALTOR®, REALTORS®) and/or the quality of services they provide (MLS®, Multiple Listing Service®)
Listing information last updated on April 19th, 2025 at 8:32pm MDT