

# \$584,250 - 24 Springbrook Wynd, Spruce Grove

MLS® #E4426098

**\$584,250**

5 Bedroom, 3.00 Bathroom, 2,304 sqft  
Single Family on 0.00 Acres

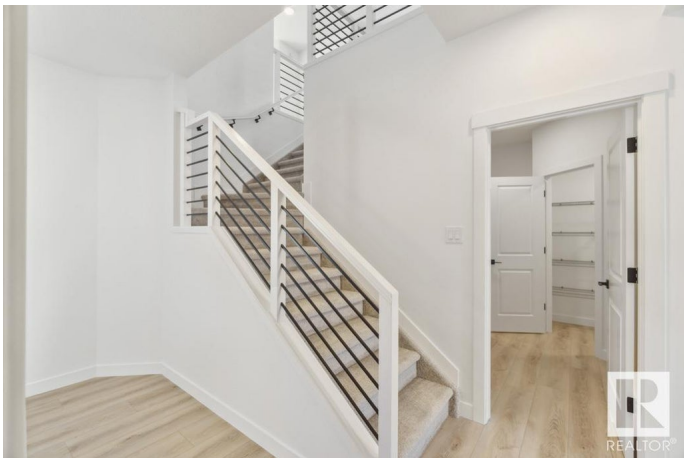
Spruce Ridge, Spruce Grove, AB

This home features our new & improved Sterling Signature Specification. This contemporary family home boasts a 2ft extended double attached garage, a separate side entrance, and 9ft ceilings throughout the main floor. The open-concept design seamlessly connects the kitchen, dining, and living areas. The kitchen is a chef's dream, featuring quartz countertops, a spacious island with an eating ledge, and stainless steel appliances. The primary suite is a luxurious retreat, complete with a 5-piece ensuite and a walk-in closet. Additional highlights of this home include a versatile bonus room, a convenient laundry room, 3 well-appointed bedrooms, upgraded railings, and rough-in plumbing in the basement for future development. Matte black plumbing and lighting upgrades.

Built in 2025

## Essential Information

|                |           |
|----------------|-----------|
| MLS® #         | E4426098  |
| Price          | \$584,250 |
| Bedrooms       | 5         |
| Bathrooms      | 3.00      |
| Full Baths     | 3         |
| Square Footage | 2,304     |
| Acres          | 0.00      |



|            |                        |
|------------|------------------------|
| Year Built | 2025                   |
| Type       | Single Family          |
| Sub-Type   | Detached Single Family |
| Style      | 2 Storey               |
| Status     | Active                 |

### Community Information

|             |                     |
|-------------|---------------------|
| Address     | 24 Springbrook Wynd |
| Area        | Spruce Grove        |
| Subdivision | Spruce Ridge        |
| City        | Spruce Grove        |
| County      | ALBERTA             |
| Province    | AB                  |
| Postal Code | T7X 2W5             |

### Amenities

|           |   |
|-----------|---|
| Amenities | On Street Parking, Ceiling 9 ft., Closet Organizers, Detectors Smoke, Vinyl Windows, Green Building, 9 ft. Basement Ceiling |
| Parking   | Double Garage Attached  |

### Interior

|                   |                               |
|-------------------|-------------------------------|
| Interior Features | ensuite bathroom              |
| Appliances        | Garage Control, Garage Opener |
| Heating           | Forced Air-1, Natural Gas     |
| Stories           | 2                             |
| Has Basement      | Yes                           |
| Basement          | Full, Unfinished              |

### Exterior

|                   |   |
|-------------------|---|
| Exterior          | Wood, Vinyl   |
| Exterior Features | Flat Site, No Back Lane, No Through Road, Not Landscaped, Playground Nearby, Schools, Shopping Nearby |
| Roof              | Asphalt Shingles  |
| Construction      | Wood, Vinyl   |
| Foundation        | Concrete Perimeter  |

### School Information

|            |                         |
|------------|-------------------------|
| Elementary | Copperhaven School      |
| Middle     | Woodhaven Middle School |

High

Spruce Grove Composite Hig

Additional Information

Date Listed

March 17th, 2025

Days on Market

74

Zoning

Zone 91

DATA IS DEEMED RELIABLE BUT IS NOT GUARANTEED ACCURATE BY THE REALTORS® ASSOCIATION OF EDMONTON. COPYRIGHT 2025 BY THE REALTORS® ASSOCIATION OF EDMONTON. ALL RIGHTS RESERVED.Trademarks are owned or controlled by the Canadian Real Estate Association (CREA) and identify real estate professionals who are members of CREA (REALTOR®, REALTORS®) and/or the quality of services they provide (MLS®, Multiple Listing Service®)

Listing information last updated on May 30th, 2025 at 5:02am MDT