

\$577,900 - 68 Vernon Street, Spruce Grove

MLS® #E4418818

\$577,900

5 Bedroom, 3.50 Bathroom, 2,385 sqft

Single Family on 0.00 Acres

Spruce Village, Spruce Grove, AB

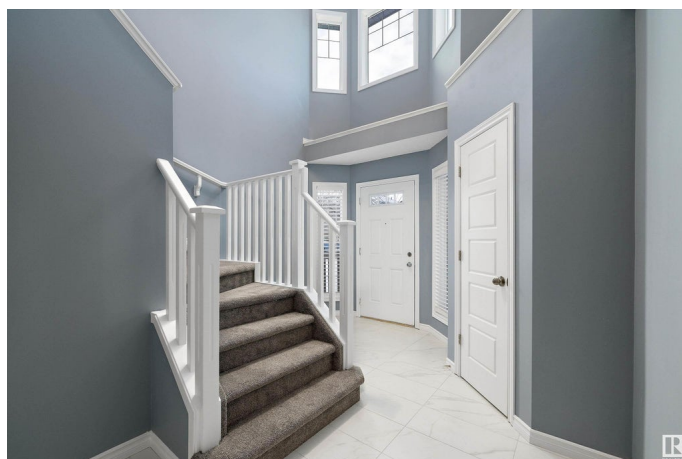
A Rare Find! 2384 Sq Ft Executive Style Two Storey in the Sought After Neighborhood of Spruce Village. Features 5 Bedrooms, 3.5 Bathrooms, Open Concept, High Ceilings, Lg Entrance, Brand New Chef's Kitchen, Island W/Seating, BI Microwave, Huge Walk Through Pantry, Ceiling High Cabinets, Lg Dining Area, Living Rm W/Gas Fireplace, Lg Office/Dining Rm, Main Floor Laundry, & 2 pc Bath. Upper Level: King Master W/5pc Ensuite, Dbl Sinks, Corner Soaker Tub, Separate Shower, & Oversized Walk in Closet, 2 More Lg Bedrooms, 4 pc Bath, & Gigantic Bonus Rm. Developed Basement: Family Rm, Huge Wet Bar/Kitchen W/Sink, Fridge, & Tons of Counter Space, 3 pc Bath W/Walk in Shower, Utility/Storage Rm, 2 Lg Bedrooms, Updates: All Appliances, Paint, Lights, Windows, Doors, & More! Fully Fenced, Landscaped Yard W/Lg Back Deck, Covered Front Deck & Dbl Att Garage. AMAZING LOCATION Close to Jubilee Park, Miles of Walking & Biking Trails, Playground, & Shopping W/Quick, Easy Access to HWY 16 & the Anthony Henday.

Built in 2009

Essential Information

MLS® # E4418818

Price \$577,900



Bedrooms	5
Bathrooms	3.50
Full Baths	3
Half Baths	1
Square Footage	2,385
Acres	0.00
Year Built	2009
Type	Single Family
Sub-Type	Detached Single Family
Style	2 Storey
Status	Active

Community Information

Address	68 Vernon Street
Area	Spruce Grove
Subdivision	Spruce Village
City	Spruce Grove
County	ALBERTA
Province	AB
Postal Code	T7X 0C1

Amenities

Amenities	Deck, No Animal Home, No Smoking Home, Wet Bar
Parking	Double Garage Attached

Interior

Interior Features	ensuite bathroom
Appliances	Dishwasher-Built-In, Dryer, Garage Control, Microwave Hood Fan, Oven-Built-In, Stove-Electric, Washer, Window Coverings, Refrigerators-Two, Curtains and Blinds
Heating	Forced Air-1, Natural Gas
Fireplace	Yes
Fireplaces	Insert
Stories	3
Has Basement	Yes
Basement	Full, Finished

Exterior

Exterior	Wood, Stone, Vinyl
----------	--------------------

Exterior Features	Fenced, Fruit Trees/Shrubs, Landscaped, Schools, Shopping Nearby
Roof	Asphalt Shingles
Construction	Wood, Stone, Vinyl
Foundation	Concrete Perimeter

Additional Information

Date Listed	January 22nd, 2025
Days on Market	110
Zoning	Zone 91

DATA IS DEEMED RELIABLE BUT IS NOT GUARANTEED ACCURATE BY THE REALTORS® ASSOCIATION OF EDMONTON. COPYRIGHT 2025 BY THE REALTORS® ASSOCIATION OF EDMONTON. ALL RIGHTS RESERVED.Trademarks are owned or controlled by the Canadian Real Estate Association (CREA) and identify real estate professionals who are members of CREA (REALTOR®, REALTORS®) and/or the quality of services they provide (MLS®, Multiple Listing Service®)

Listing information last updated on May 12th, 2025 at 4:32am MDT